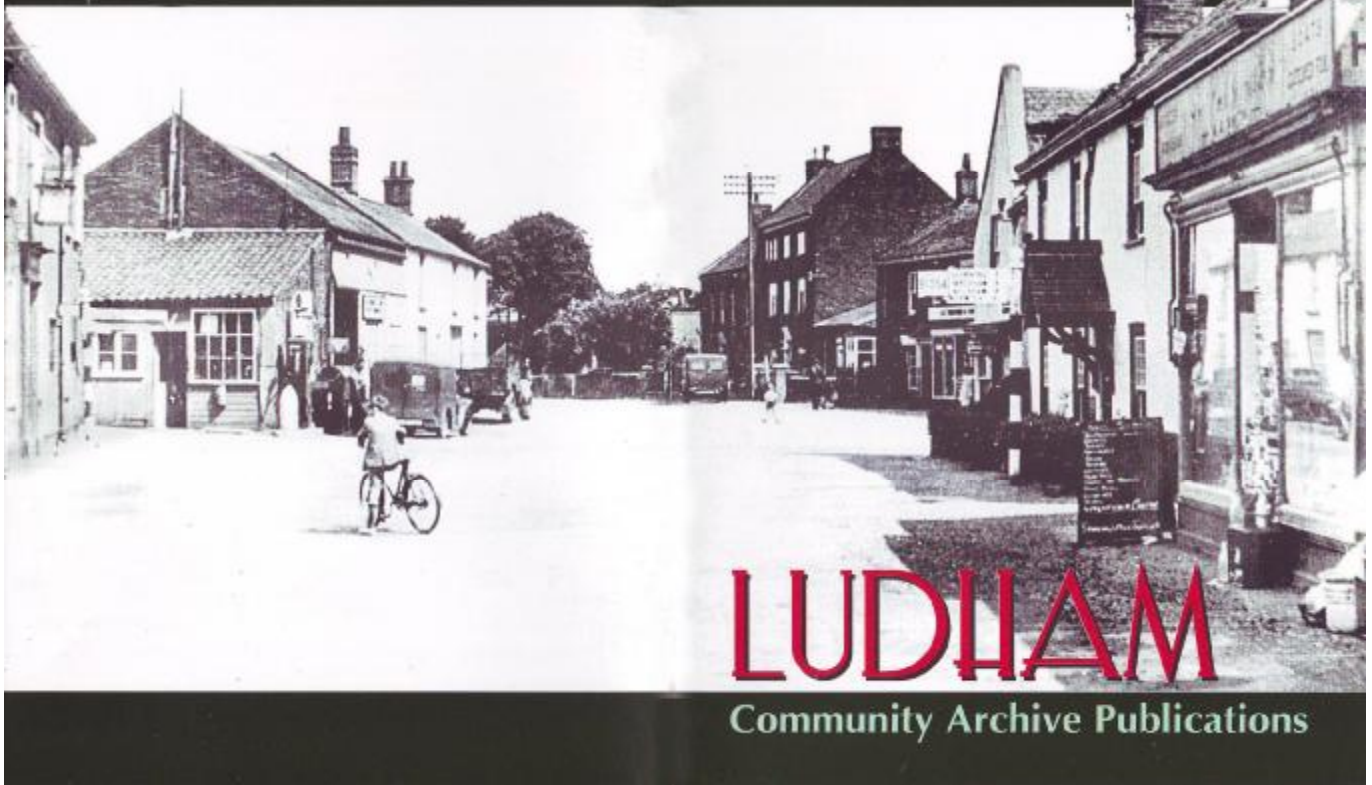


LUDHAM EVENTS IN
THE 20th CENTURY
By MIKE FULLER



The Ludham Community Archive Group

The group came together during the Jubilee year of 2002 to celebrate it through a community event in the village. The result was a textile triptych, which was completed with the collaboration of over 100 residents of the village. It is now on show in the Parish Church of St. Catherine's. We were supported in this enterprise by the Arts Officer of North Norfolk District Council, Brenda Seymore, and by our Art Tutor, Nicky Maule.

While the project was in progress we introduced local walks, led by knowledgeable villagers, to learn more about the community in which we live. Winter walks also evolved from this. We were also introduced to a method of recording the information that we were acquiring during this process and it was at this point that the archive aspect of the project really began.

Ludham Archive is held on computer and continues to expand as further information comes to light. Photographic, pictorial and a variety of other images, supplemented by reminiscences form the basis of the archive. In addition, many people have been interviewed and the results recorded. All of this is seen as a beginning of what should become a continuing process to record the evolution of a changing community. Archive materials are open to access by villagers and can be seen at regular evening meetings. Dates of meetings can be found in the monthly parish newsletter.

The archive provides the source of material to make publications available as CD Rom and other visual media, as well as pamphlets and booklets.

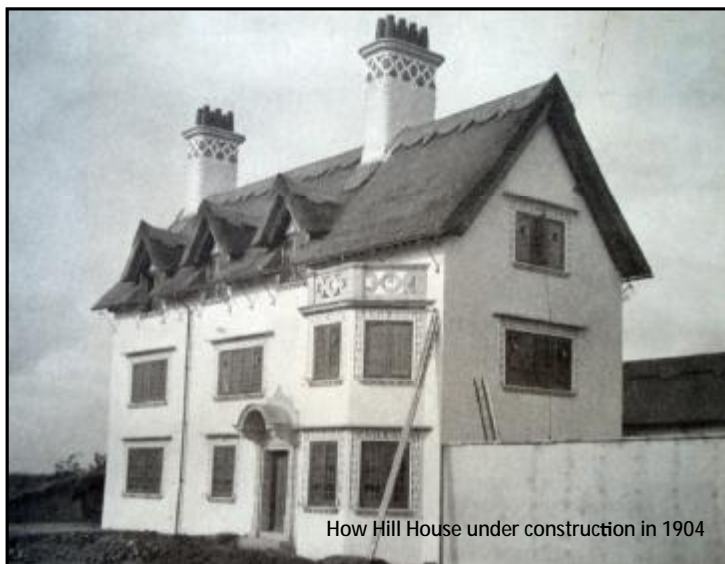
LUDHAM EVENTS IN THE 20th CENTURY By MIKE FULLER

The Broadland village of Ludham looks timeless, but a lot of changes can happen in 100 years. This booklet from the Ludham Community Archive Group lists some of the changes that have happened in the 20th Century in words and pictures.

Mike Fuller is a long time local resident and a founding member of the Ludham Community Archive Group. This booklet is the result of Mike's research into Ludham's past. Let it be your guide and enjoy your trip through the 20th Century.



Mike Fuller showing the way



How Hill House under construction in 1904



Edward Boardman



The former Spread Eagle



Throwers Store

1900 – 1909

- 1900 The Fitzhugh family were living at "The Grange" and will continue to do so for another 100 years.
Population of the village at this time was 639
Ludham, sports day held on the Grange Meadow
- 1901
- 1902 How Hill land was purchased by Edward Boardman.
Ludham Stores were started by Thomas Thrower. He was told it would not last 6 months! (It is still going)
School closed for coronation of Edward VII. Whooping Cough epidemic at school during March.
- 1903
- 1904 How Hill House was built by Edward Boardman
Spread Eagle P.H. changed from public house to Temperance Hotel. Harrison's Boatyard was sold and family left for America. Rose and Crown pub changed to Crown House by Ebenezer Newton
Laurels Farm (Home Farm) purchased by the Mattocks family whilst still living in Pages Farm.
Emily Clarke Trust started after she died, for the repairs to the Church and for poor coals etc.
Constable Robert Woodcock was the Policeman
- 1905 Edward Boardman became Lord Mayor of Norwich.
- 1906 Ordinance survey map of Ludham published
- 1907 Ladies race held during Womack Regatta sailing week
- 1908 Fire at Hall Common Farm on December 3rd. William Grapes was living in the house.

Ernest Alma Dale was Postmaster and Inspector of Public Nuisances. He lived in Church View.
- 1909 Edward Boardman purchased Broadmead Farm. Charles and Gregory Page drowned on Broad, buried in Ludham Church.



Sports Day, about 1900



Grace Lyons shop

1910 – 1919

- 1910 Grace Lyon was the owner of what is now the Butchers Shop.
Last regatta held at Womack during this year.
Crome's Farm purchased by Edward Boardman. He also purchased most of Arron Neave's Estate.
- 1911 Cottage at Ludham Hill farm demolished. New Cottage built.
Coronation celebrations for King George V were held.
- 1912 Floods in August demolished part of the bridge at Ludham.
Turf Fen Mill damaged by floods and did not work again.
Arthur Beevor, Carrier and carter, started after Robert Beevor retired. Little Holland was built from two cottages during this year. Nursery and Gardens started on old site of Corn mill, Lovers Lane.
- 1914 Mr. & Mrs. Charles Thompson married on Boxing Day. He was gardener and carrier to Stalham.
Harry Grapes said he was the last person to use the Old Staithe on Staithe Road before it was closed by Dr Gordon.
- 1915 New Ludham Bridge built from red bricks with square pillars and a base of Elm piles 6 feet sq.
Detachment of volunteer Home Defence was started in Ludham with 80 names on the roll.
- 1916 Edward Boardman extended How Hill House.
In April children gathered 760 Easter Eggs for wounded soldiers in Hospital.
In May School children sent 35 shillings to captive British soldiers.
- 1917 January 30th Schoolboy Jack Goodwin saved another boy after falling through the ice. He was rewarded.



The old staithe - Staithe Road

Ludham Carrier's cart



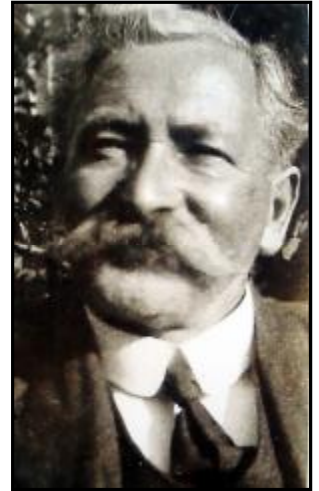
1920 – 1924

- 1920 The Slipper memorial stained glass window was placed in the church.
Ludham war memorial was made by F. J. Perfitt of Stalham. Cost £195.9.0 paid by public subscription.
John Dale became Postmaster after his father.
Travelling Circus visits the village.



Steam Threshing

- 1922 Meeting held to discuss recreation ground.
Fritton farm changed to small holdings as the government wanted land for Ex. servicemen.
Charles Green purchased Beech Farm. Reginald Bell purchased Green Farm.
United Automobiles Services started a bus service from Yarmouth to Ludham. The driver slept at the Kings Arms overnight.
Powell family took over the shop on Stocks hill from Grace Lyon.



George Hayhurst

- 1923 England's Wooden House built (forecourt garage).
George Thrower takes over the Post Office at Ludham.
Village Hall playing fields purchased on the 8th February.
Percy C. Turner became the landlord of the Kings Arms.
Robert Watson and about 100 other people from this area emigrated to the U.S.A.
Debating Society was formed.
St Catherine's branch of the Mothers Union was formed.

- 1924 Retirement of the Headmaster Mr. Hayhurst.
Electricity comes to Ludham.
Womack bungalow built at ex Harrison's yard.
Womack View House, Staithe Road was sold on 1st October.
Mr. George Kitchener became Headmaster at the school.
United Services buses now run both to Yarmouth and Norwich



Womack bungalow built at ex Harrison's yard.



Village Hall

1925 – 1934

- 1925 9th February the cottage and buildings near St Benet's Level Mill caught fire. Fred Roll was in residence.
Liza Clarke opened a sweet shop in the old communal Baker's shop opposite Manor gates.
- 1926 Village Hall built on the playing field.
Catfield Road council houses were built this year.
- 1927 Cyril Bensley started his threshing business at Fritton Road.
- 1928 24th July vandalism at St Benet's Abbey.
Humphrey Boardman rowed for Great Britain in the Olympics.
- 1929 Arthur Berry started a carrier and transport business from Gypsy lane which was sold to Billy Chapman in 1969.
Scott Jacob was Police officer for Ludham.
- 1930 Hunters Boatyard was started by Percy Hunter and sons Stanley and Cyril.
Mr. Brooks had a shop in front of Shrublands selling and repairing cycles as well as cigarettes and sweets.
Humphrey Boardman won two gold medals at 1930 Empire Games in Canada.
National Savings movement started in the village in August.
- 1931 The church organ was moved from the right side of the aisle to the left near the screen.
- 1932 High Mill House built by Mr. Slipper. At the same time the mill top was removed and it was turned into a garage.
- 1933 Constable Sissons became Policeman .
- 1934 Outbreak of Scarlet Fever at school.

Humphrey Boardman at the
Amsterdam Olympic Games



View from Ludham Bridge
Parkinsons Shop, 1930's

1935 – 1943

- 1935 Green (Low) farm was purchased by Clifford Kittle.
High House Farm was purchased by Buller Goodwin.
King George V's Silver Jubilee held at Village Hall. Women's Institute formed in Ludham.
New Police House built on Norwich Road.
- 1936 Jan 20th King George V. dies.
Fuller family arrived in Ludham.
Chris Boardman won gold medal and oak tree at 1936 Olympics in Germany.
- 1937 Coronation party held at Village Hall for King George VI.
Stalham School opened to take the over 11 year olds from surrounding area including Ludham.
Church clock repainted by John Beguely.
England's Millwrights workshops were demolished. William Wright built West End Lodge for his retirement.
- 1938 Homestead at Lovers Lane was sold to Charles Thompson; he had previously been renting it for some years.
- 1939 Grange Meadow was ploughed up for food as it was war time.
The Government evacuation scheme was in place for Ludham, although it was never used.
- 1940 The Army camp was built both sides of School Road and in the Manor grounds. There were searchlights in other places.
Ludham Defence Volunteers were formed and later became the Home Guard.
First three bombs dropped on Ludham at Brayside and Norwich Road. Ludham Home Guard patrolled Hemsby beach as part of their duties
- 1941 Richard Costain Ltd started building the airfield in February and the first spitfires landed with 152nd squadron on 25th November.
German bomber machine gunned Ludham at Stocks Hill killing Mrs. Powell in March.
Fire Station built by volunteers on land given by Charles Green of Beech farm.
First water tower built for the airfield. Later used by North Norfolk District Council for Ludham piped water.
Sergeant Edmonds was the Police Officer.
- 1942 Stuart Boardman TT joined 5th Norfolk Regiment. He was killed in action in Malaya
River bank near Horsefen (Goodwin's) Mill broke down and flooded the marshes for about six weeks.
American bomber crashed on Ludham airfield late 1942. Indoor shelters were installed at the School due to the nearness of the military.
MBE presented to Thomas Robinson of Aubrey House. Headmaster George Kitchener retires.
- 1943 American Lockheed Lightning crashed in the street near Thrower's shop. Plane called Vivacious Vera. The pilot was saved and returned to Ludham in the 1980's.



1944 – 1954

- 1944 Airfield became HMS Flycatcher from 24th August until 25th February 1945.
Mr. Bird became new Head Teacher at Ludham School.
6th Duke of Wellingtons were at the army camp in March before leaving for D Day in June.
Ludham branch of the British Legion was formed from the Catfield branch.
Membership was 1/- (one Shilling).
- 1945 Lancaster bomber crash landed and finished across Catfield Road on March 22nd.
Airfield closed until September for maintenance. School closed for VE day.
Land Army girl set fire to field and hedge near Mill Lane! It took five hours to put the fire out.
- 1946 Official Victory celebrations on 8th June.
New electric cooker installed at school and in use. Rolls Garage was started this year.
- 1947 Oak trees planted on West side of Catfield Road.
Womack House was sold to Dr Gabriel.
Heavy snow during February and March All roads were blocked to Ludham for several days.
School closed for wedding of Princess Elizabeth and the Duke of Edinburgh.
Dr Wilson became a Ludham Doctor.
- 1948 Deeds of Womack Staithe were handed over to the Parish Council from Smallburgh drainage board.
Dr Brown retired as a Doctor.
An R.A.F. Meteor F4; made a dead stick landing on Airfield.
Girls Friendly Society re-instated after lapse of several years.
- 1949 *Col. C.H. Taylor died. He was a solicitor. The Essex Regiment and the Ludham Home Guard.*
Infants took part in competition in Norwich County music festival and gained second place.
- 1950 Serious barn fire behind Albury House in Malthouse Lane. Hudson's took over the butchers from Smith's. Thompson Thrower (Pat) was undertaker based at "Woodland" at Horsefen Rd.
- 1951 Ludham Garage built by R. D. Brooks and Son on old site of England Millwrights land.
Horsefen (Goodwin's) Mill demolished as deemed a river hazard.
School closed for a week as staff had flu.
- 1952 Air Ministry finally paid for purchase of airfield land.
School went to Stocks Hill to see Queen Mother on way to Edward Seago's house in Staithe Road.
- 1953 Land purchased from Laurels Farm for housing on School Road, Laurels Crescent, and Group Homes. Hall Common cottages were renovated at this time. Newly built classrooms now in full use - opened by Dr F Lincoln Ralphs.
- 1954 Children's playing field in Catfield Road transferred from School .
Film "Conflict of Wings" was shot in Ludham in April with some parts filmed at Hickling.
"Greenbanks" built in Malthouse Lane.
Forget -Me-Not Club formed by W.V.S.members.



1955 – 1963

1955 Mr. Anderson closed his Blacksmiths business, at the School Road shop.
Last Houses built in School Road; No's 23 & 25.
Dr Bolt joined the surgery.

1956 Hulver purchased by Clifford Kittle from the Parish Council as it could not afford the upkeep.
School toilets put on mains water and flush toilets installed.

1958 Fire Station closed. All had been volunteers.
Mr. Knights changed the Butchers shop to Dairy and Café.
A Brick Kiln was found in High Mill field after Mike Goodwin's tractor fell into it.
Glazed Tunnel.



1959 Bakers Arms Public House closed in April. It was demolished for new road scheme.
New Ludham Road Bridge built of concrete with new piles and road straightened.
Transfer of trusteeship of the Village Hall to the Parish Council.
Remainder of runways and taxiways were taken up.
Home Office stores closed down on the airfield. How Hill corn mill converted to residential.

1960 Fire at Cook's Shop in the storage buildings. All burnt but the Thatched house was saved.
Garrett's House demolished during the year.
Albury House alterations, new front door and side door removed. School closed for Royal Wedding.
Workers Educational Association Local branch transferred from Potter Heigham.



Throwers Shop - 1960's

Norwich Road before widening

1961 Disposal of Air Ministry land at Ludham to Norfolk County Council.
Beech Farm purchased by the Brooks family including the Malting and Brick Kiln.
Barnard's store started in the corner shop.

1962 Women's Branch of British Legion formed.

1963 Heavy frost and snow from January to March.
Roads blocked and even frozen underground pipes.
Ludham Village to be the first to paint its face - but it never happened.
Village Hall and playing field became a Foundation on the 23rd February.



1964 - 1972

- 1964 Dr Wilson left for a new post in London.
Grouped homes started building in School Close.
Mooring fees introduced at Womack Staithe.
Dr Gabriel joined Ludham Surgery.
The Butchers became A. J. Gower's. Staff room built at the School.
Percy Hunter died.
North Walsham Referee's primary school six a side football tournament won by Ludham School.
- 1965 New bus shelter built on Bakers Arms Green. Leonard Harris became policeman for Ludham.
Broad Reaches was started.
- 1966 Mr. & Mrs. Paul purchased Ludham Bridge Stores.
School House was sold by the School in March.
- 1967 High Street Methodist Chapel celebrates its centenary. Willow Way estate was started.
Eric Edwards started working at How Hill.
First meeting of the Friends of the Group Homes, May 30th.
The Bell from H.M.S. Ludham was presented to the School on 21st June.
Mrs. Vi Bensley became a magistrate.
How Hill became a residential education center for children.
- 1968 Crop spraying firm use the Airfield for spraying crops.
Norfolk Education tries to stop access to How Hill Staithe in December.
Norfolk County Council purchased Hunter's Yard
Formation of Ludham Society.
- 1969 Fred Barker from High Mill Cottages emigrates to Australia at 80 years old.
Church screen and Tympanum was restored.
- 1970 Village sign erected on Bakers Arms Green.
Designed by Joan Snelling and carved by Phillip Sayer.
Five bungalows built on Latchmoor Lane. Start of Latchmoor Park Estate including new Yarmouth Road lay out and Horsefen corner.
Post Office delivery by moped from November 17th.
- 1971 Malting's and Brick Kiln converted to flats with car park and lawns.
Population at this time was 1142.
Mr. Bird retired as Head Teacher. Norwich Road was widened.
Dr. R. Jarvis joined the surgery
- 1972 Valerie Miles became new warden of Group Homes.
School closed for Silver Jubilee anniversary. Mr. R. F. Adams commenced as Head Teacher in April.



Restored thatched cottages, 1970's. Timgems shop

Village sign dedication



1973 - 1984

- 1973 Opening of Ludham sewage works using ex RAF airfield facility and land.
- 1974 Brinded and Gilding left Womack Staithe and moved to the Blacksmiths shop in School Road. England's wooden house was demolished to make way for new Garage forecourt. Tim Gems took over the Saddlers Shop, Norwich Road. Edward Seago died in Ludham at age 63. St Benet's Players stage their first production in Village hall "With vacant possession". Beulah Gowing became first Church record keeper. Ludham School Centenary March 21st & 22nd. Raising of wherry "Lord Roberts" but it sank two days later.
- 1975 Womack Staithe given a spring clean. The Chapel in Staithe Road was demolished. Joan (Pop) Snelling moved to France.
- 1976 Actor William Mervyn died at his home, Folly House.
- 1977 Yarmouth Road footpath was agreed on May 23rd. A Red Oak presented by Peter Boardman was planted in the Village hall grounds. A new seat was erected at How Hill Staithe. New Doctor's surgery built on Staithe Road.
- 1979 Heavy snow at Ludham for four days. Roads blocked etc.
- 1980 Control Tower asked for change of use to living accommodation. On June 15th Snooker at Village Hall raised £250 for charity. King's Arms raised £1000 for charity at a darts marathon. Last mail was stamped at Ludham. Now sent to Great Yarmouth.
- 1981 Norfolk Wherry trust rents its base from N.E.C. Rev. George Nicholson was ordained as vicar. The journal of the Norfolk Industrial Archaeology Society published an edition on Ludham.
- 1982 Dr Savage joined the Surgery.
- 1983 Miss Parsons retired as church organist in December after 32 years. Norfolk Wherry Trust purchased the Wherry base. Womack Cruisers sold for housing. Ronald Philip Scott awarded the B.E.M for services to Scouting and the B.B.C.
- 1984 Mardling seat around the Oak tree made by Mike Fuller and presented by Ludham Wives. Heavy snow for a few days – roads blocked. "My Way" Catfield Road had two fires on 21st November.



The Mardling seat is open for business

1985 – 1995

1985 Jan 18th, men fined for taking water soldier plants from Horsefen marshes.
Miss Betty Pettit retired from nursing and health care after 30 years of service to Ludham.
A Spitfire was built on Ludham Airfield by Ralph Hull.
Women's Institute Golden Jubilee.

1986 "The Homestead" was left by Charles Thompson to Marion Roll.
Bells replaced in the Church Tower.
Toad Hole cottage becomes a museum.



1987 Beech Farm barn was blown down by gales. The rubble was used for the Wherry Trust base.

1988 Wet Shed built at Wherry base.
Planning date for Orbit housing 17th May.
Chapel doors renewed by Mike Fuller.

1989 Post Office moved into Thrower's shop.

1990 Village sign rebuilt in glass fibre by Mike Fuller and painted.
Norwich Road footpath and fence rebuilt and path relayed.
Ludham won silver salver in the East Anglia in Bloom 1990.
"Latham's" Steam Boat Company started in the Old Foundry.
Mrs. Phyllis Ellis opens School wild life area.

1991 Church clock face repaired and painted by Mike Fuller.
Census figure for Ludham 1285 people.

1992 Village Venture competition.
Certificate of merit presented to Ludham playground appeal.
Floods at Ludham Bridge.

1993 Two Henley Regatta boats built at the Old foundry works.
Cyril Albert Thrower (90) dies 21st March.

1994 Swallowtail boatyard built during this year.
Dr. Sudlow joined the surgery.
Church screen and Tympanum were restored.



1995 Hunter Fleet saved by Heritage Fleet Trust after buying out from Norfolk County Council.
50th anniversary of V.J. Day held at village Hall 19th August.
Serious workshop fire at Ludham Marine.
School Road Anniversary of V.E. Day at Ludham Church May 7th.

1996 - 1999

- 1996 The Control Tower was reborn as a museum for two years then closed.
- 1997 Environair systems started in the old Foundry.
Dr Sale started at the surgery.
- 1998 The annual service at St Benet's Abbey held in August every year.
Humphrey Boardman died.
- 1999 Jenny's Mill (St Benet's Level Mill) restored.



Mike Fuller restoring the village sign in fibreglass after the original had rotted.





The view from the church tower

Not much has changed
since 1927



We are grateful to everyone who has supported us in this project, particularly our local sponsors who are listed below.

Sponsors

- Neil Smalley - Landscape Painter in Oils
- A. J. Gower & Son (Rodney Wright)
- Throwers of Ludham
- Ludham Marine (John Brinded)
- "Ryder Marine UK" Bosuns Locker Chandlery
- Emily Rose Wild Life Trips
- The Bridge Stores
- Wayfarers Restaurant
- Environair Stsyems
- Ludham Garages Ltd.
- East Coat Leisure Ltd. High House Farm, Ludham
- Swallowtail Boatyard, Colin and Wendy Buttifant & Son
- Flowers By Kim
- Womack Staithe Trust

100 Years, Booklet Issue 1.
December 2009
Written by Mike Fuller
Edited by Nigel Pope
Re-Edited by Jon Simpson, 2015.



Supported by the European Agricultural Guidance
& Guarantee Fund & Defra

